



Location of the race : South of Mulhouse (F) close to Basel (CH) . See details on page 2

Date and timetable : On Saturday, October 7th 2023 ; first start planned at 10 am - commercial boat navigation stopped from 10 am to 12 am and then from 1.30 pm to 3.30 pm .

Race distances : see detailed plan on page 3

- 8000 m with U turn at 6000m Male/female/ mixed
 - o J17-18
 - o Seniors
 - o Masters
- 4000 m straight line Male/female/ mixed
 - o J15-J16
 - o Para-rowing / Adaptive rowing

Rowing shells

- Eight 8+
- Four / Quad (4- ; 4+ ; 4 x ; 4x+) Gigboat
- Double / Pair (2 x ; 2-)
- Single (1x)

Crews

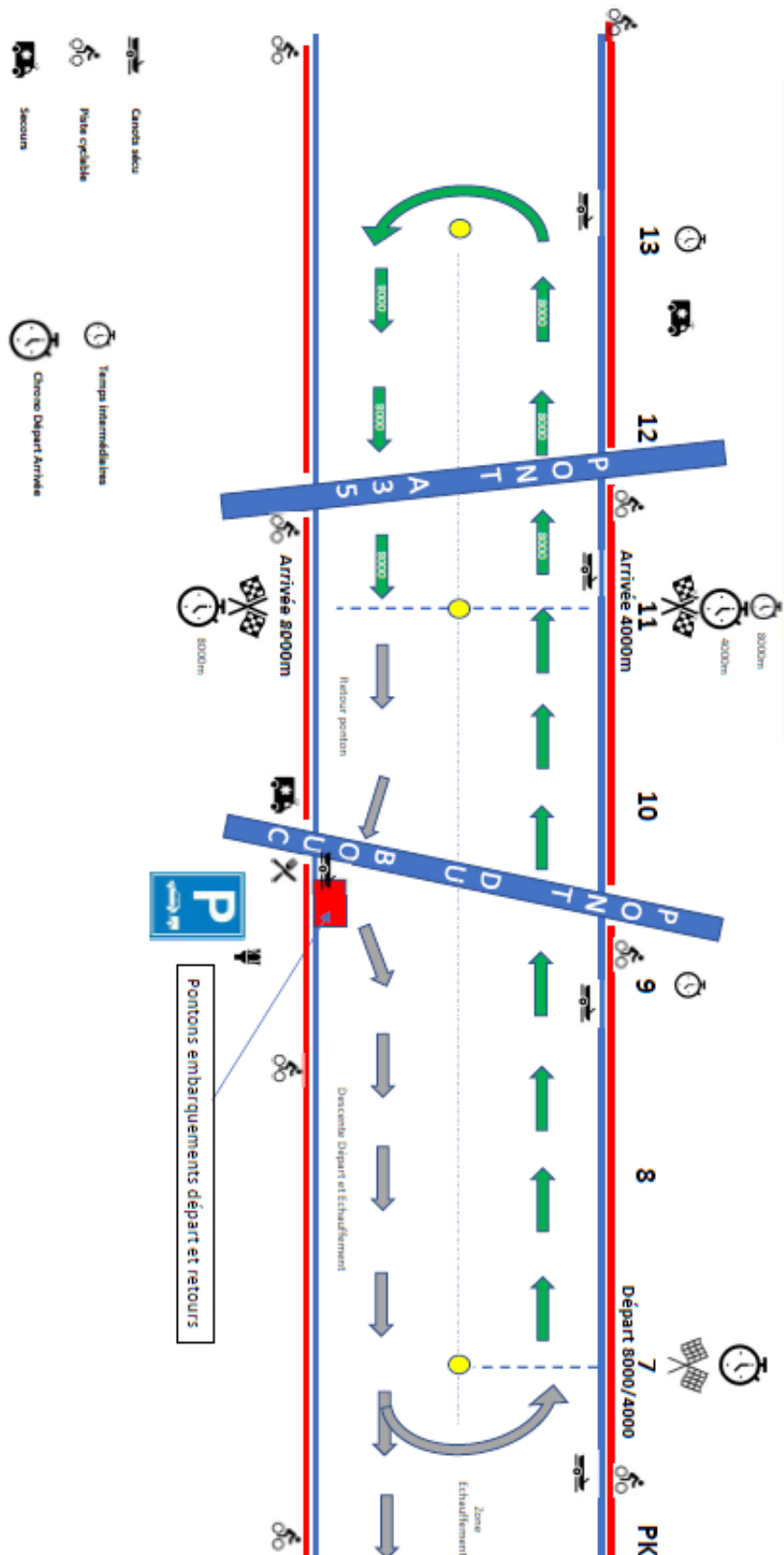
- Open to French and other countries rowing clubs
- Combined club crews accepted (maxi 2 clubs/boat)

Information and registration : contact by mail cd68@ffaviron.fr

Participation Fees : 12 €/ seat for 8000m race
6 €/ seat for 4000m race



Régate Longues distances de Mulhouse Bief de Niffer



Start point (PK7) GPS 47.75833006631235, 7.480552647191905

Turn point (PK 13) GPS 47.76878590141757, 7.3975741147567815

Boat park , pontoons (PK 9.5) GPS 47.76273388126821, 7.444595941957881